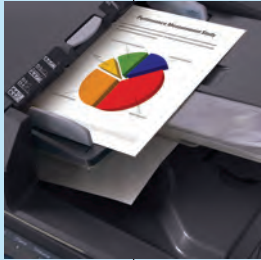


CS 300ci Color Multifunctional System

DOCUMENT IMAGING WITH CONFIDENCE.



Copystar CS 300ci Color MFP:

The Copystar CS 300ci redefines Color Multifunctional Systems with a bold and innovative new design that de Engineered with superior performance in mind, the CS 300ci will revolutionize the office environment. At productive output speeds of 30 ppm maximizing your business efficiency. These innovative product features and options combine with exceptional color image quality and pr

COLOR NEVER LOOKED SO GOOD

The CS 300ci brings the **WOW** factor to your business. Whether you want to persuade, present or just attract attention, adding color will raise the bar on your documents, while helping to drive your company's message.

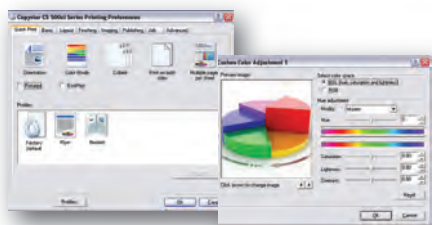
Powerful, intuitive and incredibly efficient, the **proven technology** engineered into every Copystar Color MFP delivers brilliant, high-impact color. In addition, an **intelligent color calibration system** puts you in control, while ensuring consistent color reproduction page after page. Colors are true, gradations are smooth, and shading is accurate.

The result? Vivid color and crisp black & white documents that reflect your professionalism.



POWER AT THE DESKTOP

Our advanced KX Driver allows users to take full advantage of unique print features including the ability to save profiles for common jobs and advanced color settings to maximize your output quality.



Productive Reversing Automatic Document Processor

With scan speeds up to 50 ipm in full color and black, the reversing automatic document processor can maximize your office productivity while handling mixed originals with ease.

Robust 1,000 Sheet Finisher

This robust finisher supports multi-position stapling and a variety of paper weights and sizes for all of your evolving finishing needs.

Efficient Duplex

Standard stackless duplex helps you reduce paper consumption by producing 2-sided originals on stock up to 90 lb Index from the paper trays.

Maximum Productivity

A standard 2 GB of RAM and 80 GB Hard Disk Drive can maximize your document processing and ensure that all of your output requirements are handled with ease.



FLEXIBILITY TO GROW WITH



Dual Scan Document Processor

- 100 Sheet Dual Scan Document Processor with Scan Speeds up to 60 ipm



Optional 3,000 Sheet Finisher

- Multi-Position Staple
- Optional 2 and 3 Hole Punch
- 16 lb Bond – 120 lb Index



3,000 Sheet Large Capacity Tray

- Letter Sized Sheets
- 16 – 28 lb Bond

Power, Performance, Flexibility

livers the unsurpassed performance, superior image quality and ultra-reliability that your business demands.

in both color and black and the unique long life technology built into the CS 300ci, you are assured superior document handling, ultimately even ultra-reliability, making the Copystar CS 300ci a powerful and flexible solution for your organization.



Wide 8.5" Color Touch Screen Control Panel

The user-friendly color touch screen control panel provides robust document handling and ease of use at your fingertips.

"On-board Document Storage"

Create a simple way for you to store, secure and access critical documents at the device through the CS 300ci's unique on-board Document Box.

Advanced USB Host Interface

Conveniently print-from, and scan-to, any USB drive right from the touch screen control panel in PDF, JPEG, TIFF and XPS file formats.

Versatile Multi-Purpose Tray

A standard 100 sheet multi-purpose paper tray can handle mixed media types, from statement to ledger, and up to 120 lb Index for your special jobs.

Flexible Paper Handling

An innovative paper path design allows for a variety of paper weights through the trays, giving you the flexibility to satisfy virtually all your print and copy needs.

HIGH END PERFORMANCE & DESIGN

- **Fast, Superior Color Imaging for a Solid Impression.** At speeds up to 30 ppm black and color, combined with proven color technology, the CS 300ci brings brilliant color to your output and enhanced quality control from the first print to the last.
- **Micro-Particle Toner.** Copystar's unique, micro-particle toner provides superior image quality in both color and black & white. 20,000 pages Black, 12,000 pages CMY @ 5% coverage.
- **Proven Technology & Ultra Reliability.** Our award-winning technology incorporates long life imaging components that can dramatically lower your total cost, while providing high productivity and exceptional image quality.
- **Ultimate Document Creation & Output Efficiency.** PRESCRIBE® offers your business a flexible, on-demand printing solution for forms, letterhead and similar corporate documents. PRESCRIBE eliminates the cost and storage space associated with preprinted forms.
- **Integrated Solutions.** Leverage the full potential of your MFP with tools and utilities designed to maximize your security, management and accounting capabilities.

YOUR BUSINESS DEMANDS



7 Bin Mailbox for 3,000 Sheet Finisher

- Output Sorting – Up to 7 Individual Mailboxes
- 16 lb Bond – 90 lb Index



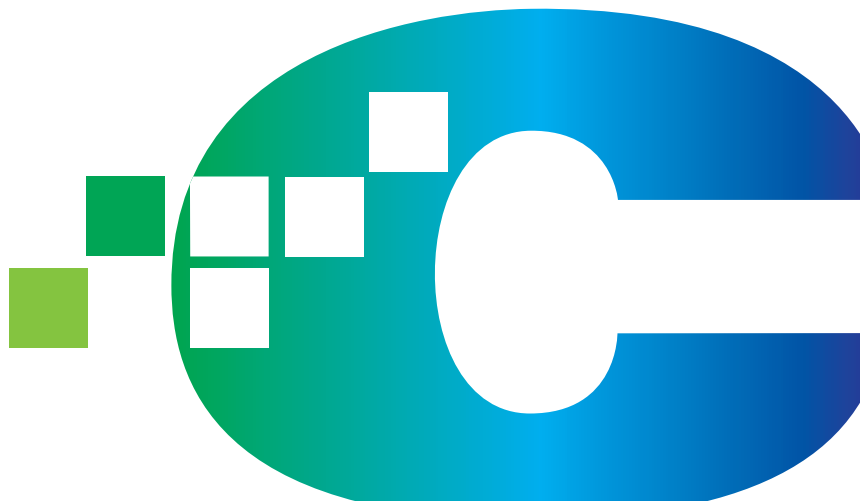
Optional Booklet Folder for 3,000 Sheet Finisher

- Folding up to 16 Sheets
- Saddle Stitch
- Letter to Ledger Sized Sheets
- 16 lb Bond – 120 lb Index



Optional Fax / Network Fax

- Add Up to Two G3 Fax Systems
- Internet Fax Kit Available



CS 300ci



Shown with Optional DSDP, 500 x 2 Tray, and 3,000 Sheet Finisher
50.9 W x 26.8 D x 48.8 H



Shown with Optional DSDP, 500 x 2 Tray, and 1,000 Sheet Finisher
48.8 W x 26.8 D x 48.8 H



Shown with Optional DSDP and 3,000 Sheet LCT
23.8 W x 26.8 D x 48.8 H



Color Touch Screen Interface
Screen Dimensions: 8.5" measured diagonally

Basic Specifications

Configuration	Color Multifunctional System - Print/Scan/Copy/Optional Fax
Pages Per Minute	Letter: 30 ppm Black / 30 ppm Color; Legal and Ledger: 15 ppm Black / 15 ppm Color
Warm-up Time	45 Seconds or Less
First Copy/Print Out Time	Black: 6.2 seconds; Color: 8.1 Seconds
Resolution/Bit Depth	600 x 600 dpi / 8 Bit Color Depth
Memory/Hard Disk Drive	2 GB RAM / 80 GB HDD
Duplex	Standard Stackless, Statement to Ledger, 16 lb Bond - 90 lb Index; 5.5" x 8.5" - 11" x 17"
Electrical Requirements/Weight	120V, 60Hz, 12 Amps / 233 lbs (mainframe only)
Max Monthly Duty Cycle	130,000 Pages Per Month

Paper Supply

Standard Paper Sources	Dual 500 Sheet Trays, 100 Sheet MPT; Auto Selection / Switching, Add Paper While Running
Optional Paper Sources	Dual 500 Sheet Paper Trays (PF-720); 3,000 Sheet Large Capacity Tray (PF-760)
Paper Capacity	Standard: 1,100 Sheets; Maximum: 4,100 Sheets
Paper Size	5.5" x 8.5" - 11" x 17" (Statement to Ledger)
Paper Weight	Trays: 16 lb Bond - 90 lb Index; MPT: 16 lb Bond - 120 lb Index; (PF-760): 16 - 28 lb Bond
Input Materials	Bond Paper, Recycled Paper, Transparencies, Cardstock, Envelopes

Print Specifications

Controller	IBM PowerPC 750 FL / 600 MHz
PDLs/Emulations	PRESCRIBE, PCL6 (5c, XL), KPDL3 (PS3), XPS (Direct Print)
Fonts	136 KPDL3, 93 PCL6, 8 Windows Vista, 1 Bitmap
Windows OS Compatibility	Windows 2000 / XP / 2003 / Vista / 2008
Novell OS Compatibility	Novell NetWare® 3.x/4.x/5.x/6.x
MAC OS Compatibility	Mac OS 10.x
UNIX OS Compatibility	Sun OS 4.1.x; Solaris 2.x; AIX; HP-UX (LPR)
Interfaces	Standard: 10/100BaseTX, Hi-Speed USB 2.0, USB Host Interface, 2 Expansion Slots
Network Print and Supported Protocols	TCP/IP, IPX/SPX, AppleTalk, NetBEUI, IPv6, IPsec, SSL, WSD Print
Drivers	KX Driver, Mini Driver, KX Driver for XPS, XPS Mini Driver, Network Fax Driver, PPD for MAC
Utilities	PRESCRIBE, PDF Direct Print, KMnet Admin, KMnet for Accounting, KMnet Viewer, Kyocera Command Center

Scan Specifications

Scan Resolutions	200, 300, 400, 600 dpi
File Formats	Black & White: PDF, TIFF; Color: PDF, JPEG, TIFF, XPS
PDF Extension	High Compression PDF, Encrypted PDF
Connectivity/Supported Protocols	10/100BaseTX / TCP/IP
Scanning Functions	Scan to Folder (SMB), Scan to e-Mail, Scan to FTP, Scan to USB, WSD Scan, TWAIN Scan
Driver	TWAIN / WIA Driver

Color and Black & White Scanner

Copy Specifications

Image Mode	Text, Photo, Text / Photo, Auto, Manual, Map
Continuous Copy	1 - 999 / Auto Reset to 1
Additional Features	Positive / Negative Reverse, Mirror Image, Rotate Copy, Border Erase, Split Copy, Electronic Sort, Margin Shift, XY Zoom
Job Management	Job Interrupt, Job Build, 10 Job Programs, Repeat Copy, 1,000 Department Codes
Color Adjustment	One Touch, Color Balance, Hue, Auto Exposure, Sharpness, Color Calibration, ACS
Magnification/Zoom	Full Size, 5 Reduction, 5 Enlargement Preset Ratios, 25 - 400% in 1 step increments
Document Box	Custom Box, Job Box, Removable Memory Box, Fax Box (with optional Fax System)

Fax Specifications

Compatibility	G3 Fax
Data Compression	MMR, MR, MH, JBIG
Transmission Speed/Modem Speed	Approximately 3 seconds per page / 33.6 Kbps
Fax Memory	Standard: 12 MB; Maximum: 120 MB
Driver	KM Network Fax Driver
Fax Functions	Duplex TX/RX, Confidential RX/TX, F-Code RX/TX, Broadcasting, Fax Box, Dual Fax

Fax System (Q) / Internet Fax Kit (A) (requires Fax System Q)

Optional Document Processors

Type/Capacity	DP-760 or DP-750 (DP-760) Dual Scan Document Processor / 100 Sheets (DP-750) Reversing Automatic Document Processor / 100 Sheets
DSDP Scan Speed (DP-760)	Simplex: 50 ipm/Duplex: 60 ipm (300 dpi)
RADF Scan Speed (DP-750)	Simplex: 50 ipm/Duplex: 30 ipm (300 dpi)
Acceptable Originals/Weights	5.5" x 8.5" - 11" x 17", Mixed Size Originals / 9 - 42 lb Bond

Optional 3,000 Sheet Finisher

Stack/Staple Capacity	Main Tray: 3,000 Sheets; Sub Tray(B): 200 Sheets; Sub Tray(C): 50 Sheets / 50 Sheets: 8.5" x 11"; 30 Sheets: 8.5" x 14", 11" x 17"
Paper Size	Main Tray: 8.5" x 11" - 11" x 17"; Sub Tray(B): 5.5" x 8.5" - 11" x 17"; Sub Tray(C): 8.5" x 11"
Paper Weight	Main Tray: 16 lb Bond - 90 lb Index Duplex; 16 lb Bond - 120 lb Index Simplex; Sub Tray (B/C): 16 - 24 lb Bond
Edge Staple Position	3 Positions: Top Left, Bottom Left, Center Bind
Optional Multi-Bin Mailbox	(MT-720) Includes 7 Trays; Supports 16 lb Bond - 90 lb Index Stack Capacity per Bin: 100 Sheets: 5.5" x 8.5", 8.5" x 11"; 50 Sheets: 8.5" x 14", 11" x 17"
Optional Punch	(PH-5A) 2 and 3 Hole Punch Unit, Supports 8.5" x 11" - 11" x 17", 16 lb Bond - 110 lb Index
Optional Saddle Stitch/Fold	(BF-720) Supports 8.5" x 11", 8.5" x 14", 11" x 17", 16 lb Bond - 120 lb Index; Over 20 lb Bond Single Sheet Folding Capacity: 1-3 Sheets - 30 Booklets; 4-6 Sheets - 20 Booklets; 7-16 Sheets - 10 Booklets

Optional 1,000 Sheet Finisher

Stack/Staple Capacity	DF-780 (Requires JS-720) 1,000 Sheets; 50 Sheets: 8.5" x 11"; 30 Sheets: 8.5" x 14", 11" x 17"
Paper Size / Weight	8.5" x 11" - 11" x 17" / 16 - 28 lb Bond
Edge Staple Position	3 Position: Top Left, Bottom Left, 2 Point Long Edge

Additional Options

KYOcapture, KYOcapture Express, Equitrac, Fax Memory, Platen Cover Type (E), Job Separator (JS-720), Attachment Kit (AK-720), Stand; Data Security Kit (E) Provides Security Overwrite and Encryption for Print, Copy, and Scan; Printed Document Guard Kit (A), Original Hard Copy Holder (DT-710)